

idfx

INSPIRATION FOR INTERIOR DESIGN PROFESSIONALS

www.idfxmagazine.com

GREAT BRITISH

The world's focus
is on UK design
and manufacturing

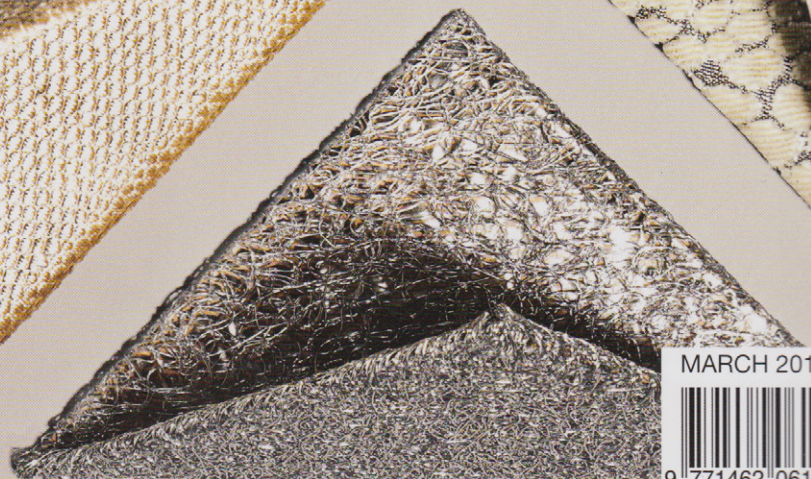
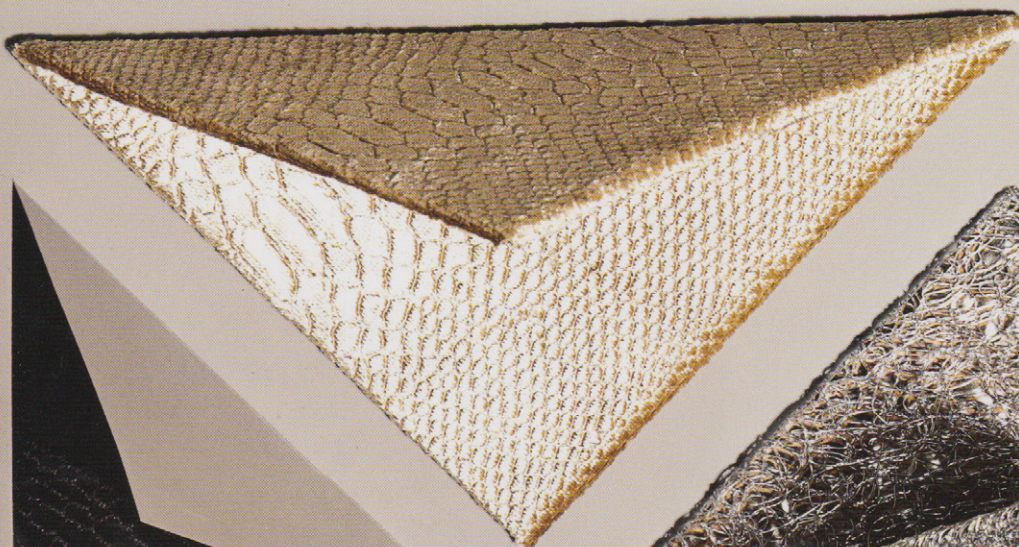
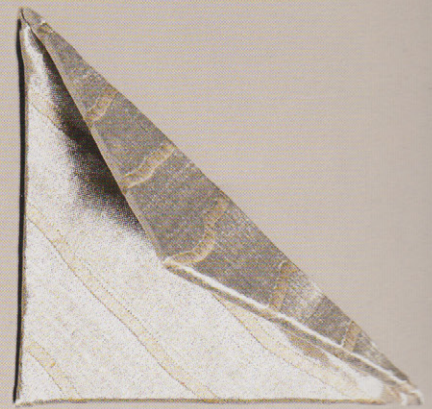
ON THE RISE

Who are the up-and-
coming designers?

Out of the fold

FABRICS FOCUS:

Spring launches,
Maison & Objet,
latest trends



MARCH 2012 / £5.80



9 771462 061052



POROUS DESIGNS

Established in 2003 by Jo Dew and Debi Harris Porous Designs specialises in high-end residential interiors. Dew (far right) has an interior design degree from the Chelsea College of Art & Design, and worked in Hong Kong before spending five years at John Minshaw Designs. Harris (above) has a degree in printed textile design from the School of Textiles and Design at



Heriot Watt University, and a career to date that encompasses residential, hotel and commercial design. 'The success of Porous Designs is the direct result of our individual skill sets, backgrounds and personalities, as we draw inspiration from one another,' says Harris. **Porous Designs. 020 7720 8232** www.porousdesigns.com

MENA INTERIORS

Melanie Rademacher is the driving force behind Mena Interiors, the company she set up in 2003 after studying a selection of architecture courses while at university in the USA, before qualifying with an interior design diploma from the Inchbald. She then spent eight years at Kelly Hoppen Interiors where she became design director. Today, Mena Interiors specialises in high-end residential work, including new-build and refurbishment projects, and Rademacher is supported by a team of three. The firm's policy of taking on no more than six projects at any one time ensures that the team delivers a highly personalised style and service to its clients. 'I measure the success of a project by how it complements my client's everyday life,' she says. Recent projects include the refurbishment of a contemporary house in Geneva and a townhouse in Chelsea. **Mena Interiors. 020 7349 7115** www.menainteriors.co.uk



NICOLA HARDING

As a route into design, it is an unconventional one: while Nicola Harding was studying theology at Edinburgh University, her design for a Fringe set was spotted by Red Bull, which asked her to create a festival suite for the brand. After graduating in garden design from KLC, she worked for renowned garden designer Arne Maynard for five years, and developed her interior design skills by renovating and selling properties.



Her London-based practice, NH, tackles both large and small-scale projects including the decoration of a houseboat on the Thames, a Georgian townhouse, and the Bel & The Dragon group of inns and restaurants. 'My style is laid back and light-hearted,' she says. 'I enjoy using traditional methods, materials and plants and a balance of vintage, contemporary and bespoke pieces.' **NH. 020 8743 6690** www.nicolaharding.com

